

## 1. TECHNICAL SPECIFICATIONS

Power: AC 240V(50Hz)

Rated load: do not exceed 400 watts

Protection Index: IP 44

The receiver can be compatible with 15 remotes at most.

The receiver will cut off electricity after working 4 minutes continuously.

## 2. WIRES CONNECT

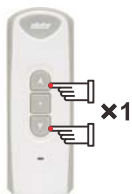


## 3. CODE LEARNING

### Way A



Power on, the motor will vibrate.



Press UP and DOWN buttons simultaneously.

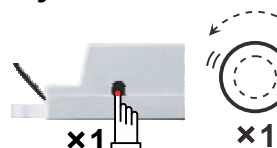


Press the STOP button once within 10s, the motor will vibrate.

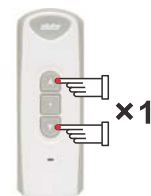


You can control the motor by the remote.

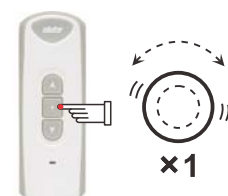
### Way B



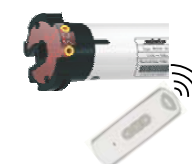
Switch on the power, press receiver's learning button, the motor vibrates once.



Press remote's UP and DOWN buttons simultaneously.

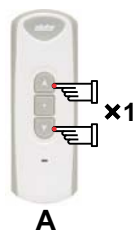


Press remote's STOP button once, the motor vibrates.



The motor can be controlled by the remote.

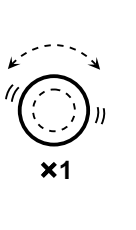
### Way C



Press UP and DOWN buttons simultaneously.



Press remote's STOP button 8 times within 10s, the motor will vibrate.



Press UP and DOWN buttons simultaneously.



Press remote's STOP button once within 10s, the motor will vibrate.

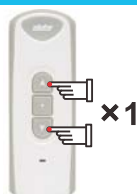


You can control the motor by remote B.

## 4. CODE DELETING

**Note:** No remote can control this tubular motor after code deleting unless you reset.

### Way A



Press remote's UP and DOWN buttons once simultaneously.



Press remote's STOP button 6 times within 10s.

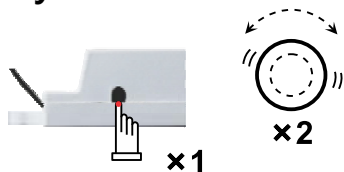


Press remote's UP and DOWN buttons simultaneously.



All remotes that have learned motor's code won't control motor.

## Way A



Press receiver's learning button for 3 seconds, the motor vibrates.  
No remote can control this motor.

## Delete the remote you are operating.



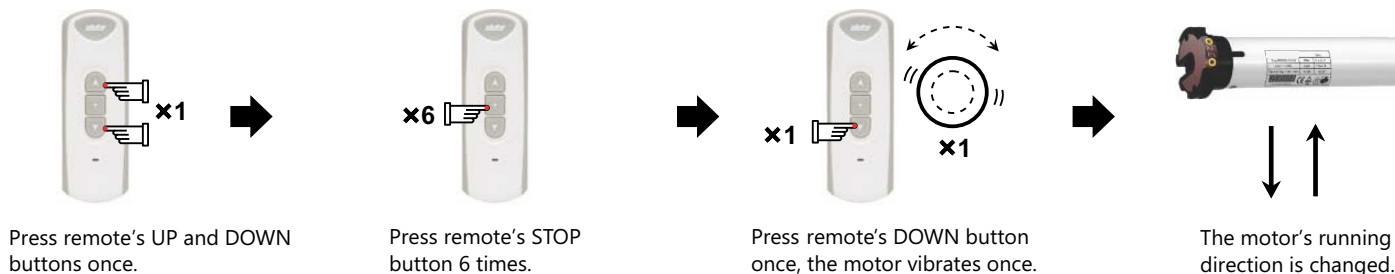
Press remote's UP and DOWN buttons once simultaneously.

Press remote's STOP button 7 times.

Press remote's UP button, the motor vibrates once.

This remote now won't control the motor.

## 5. DIRECTION CHANGE



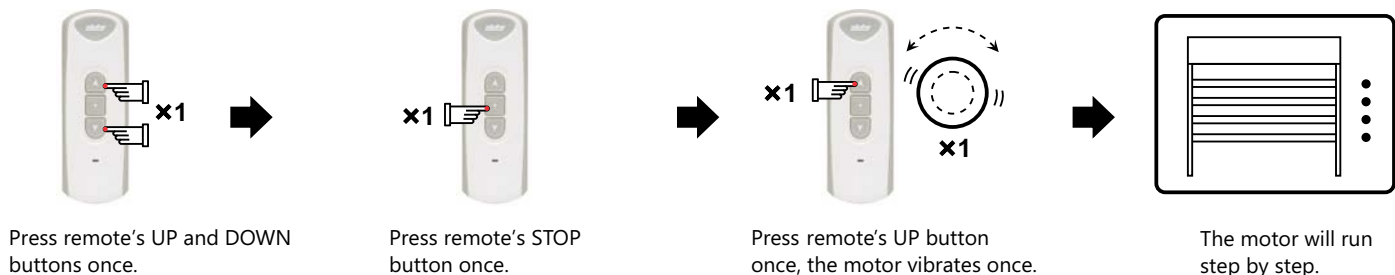
Press remote's UP and DOWN buttons once.

Press remote's STOP button 6 times.

Press remote's DOWN button once, the motor vibrates once.

The motor's running direction is changed.

## 6. SET STEP BY STEP FUNCTION



Press remote's UP and DOWN buttons once.

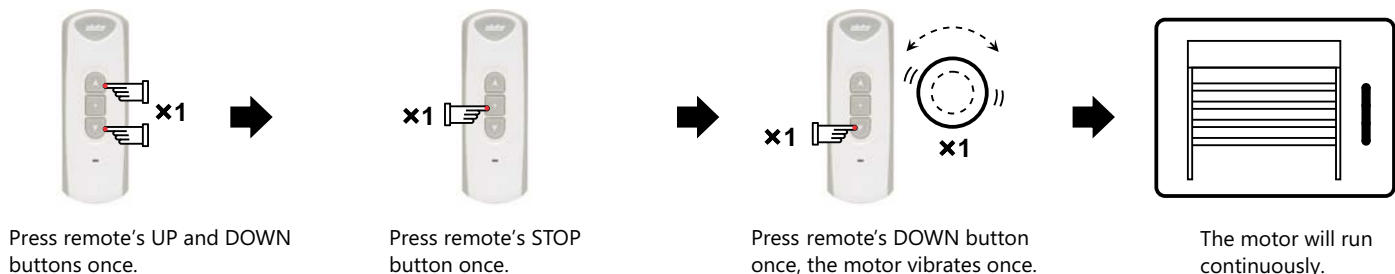
Press remote's STOP button once.

Press remote's UP button once, the motor vibrates once.

The motor will run step by step.

If the motor is in vibration state, press remote's UP or DOWN button for 3 seconds, the motor will run continuously.  
Press the STOP button, the motor will change into vibration state.

## 7. DELETE STEP BY STEP FUNCTION



Press remote's UP and DOWN buttons once.

Press remote's STOP button once.

Press remote's DOWN button once, the motor vibrates once.

The motor will run continuously.



## Announcement

The setting may fail due to other signal interference. In this case, please reset.

The remote RE101 is taken as an example in this instruction. The receiver is compatible with several other fixed code remotes.

If remote's battery is in low power, please replace it.

The receiver is of high voltage, please do not place it in humid atmosphere.

Children should be supervised to ensure that they do not play with the appliance.

Working temperature: -10°C - +55 °C

All products are as per real subjects. There will be no prior notification if any change in appearance, color, functions etc.