

## 10 Set motor to factory mode



press and hold the program button for 5 seconds.

indication light

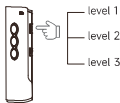


Release the button till the indication light turns on (the light will turn off after 5S), the motor is set to factory mode, all the settings are deleted.

## 11 Adjust motor's running speed

The motor has three speeds available: 78r/min, 104r/min, 130r/min. Follow below steps to adjust speed.

A.If you are using RE701V, RE702V, RE703V, please use the Speed adjustment button on its right side. Slide the button to top position, the motor vibrates, motor's speed is switched to highest level. Slide the button to bottom position, the motor vibrates, it's speed is switched to lowest level.

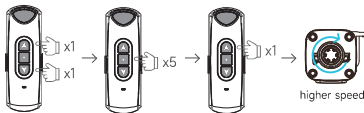
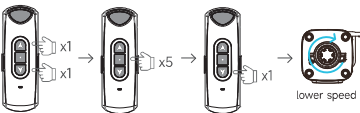


B.If you are using other remote, follow below steps:

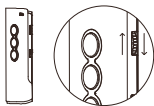
1.Short press remote's OPEN+CLOSE button simultaneously and release.

2.Short press remote's STOP button 5 times.

3.If you want to switch motor speed to a lower level, short press remote's CLOSE button one time; Otherwise, short press remote's OPEN button one time, Then the motor will vibrate. The number it vibrates stands for different speed level, 1 vibrate=78r/min, 2 vibrate=104r/min, 3 vibrate=130r/min.



## 12 Rotate fabric sheets



Slide the wheel at the upper left side to rotate fabric sheet, clockwise or anticlockwise.

## e Trouble Shoot

Common fault	Approach
Motor doesn't respond or doesn't run.	Check power supply.
The paired remote can't control the motor.	Check if remote's battery is low.
Motor's running direction is different from remote's commands.	Change motor's running direction.
The fabric sheets can not close enough in the middle.	1.Check if motor's running direction is different from remote's commands, 2.Reset Open and Close limit.
The two fabric sheets in the middle impact, or the two sheets at end of the track can not slide to the end.	Delete Open & Close limits and reset limits.
The motor won't stop upon obstacle.	Check if screws on the track are tightend Check belt length.

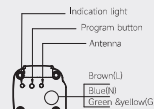
# GALAXY

## VERTICAL BLINDS

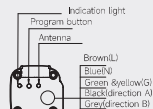
INSTRUCTION MANUAL

## WSCMXF-2/6

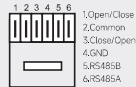
INSTRUCTION MANUAL



WSCMXF-2 / 6



WSCMXF-W-2 / 6

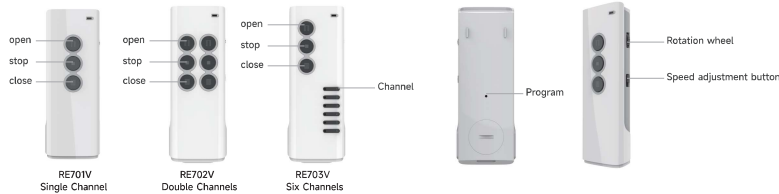


Connector model:6P6CRJ11

## Motor Parameters

Model	torque (N.m)	speed (r/min)	input voltage (V)	frequency (Hz)	rated power (W)	rated current (A)	load cap. (μF)	motor weight (kg)	motor length (mm)	insulation class	protection class	intermittent duty	wire module	pluggable module	RS485 dry closure	high-voltage switch control	hotel card mode	remote control
WSCMXF-2/6	2	4/5/6	100~240	50/60	18	0.1	50	0.66	312	CLASS B	IP40	S2: 12min	3 wires	•				•
WSCMXF-W-2/6	2	4/5/6	100~240	50/60	18	0.1	50	0.66	312	CLASS B	IP40	S2: 12min	5 wires	•	•	•	•	•

## Remotes



## Features

1.The motor can be added with a pluggable module to enable it to be smart controlled. Distributor/installer can add module freely. Couple modules are available to be compatible with : Tuya Wifi, Tuya Zigbee, TmallGenie,xiaomi speaker, Huawei speaker, Baidu speaker.

2.Motor's control methods: Speaker, APP, remote.

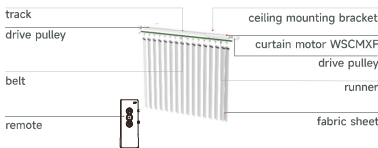
3.The whole track system and motor are patented.

### Warning:

1.Read this instruction carefully before using.  
If there is any issue with power supply, please do ask manufacturer or professional personnel for assistance.fabric sheets.

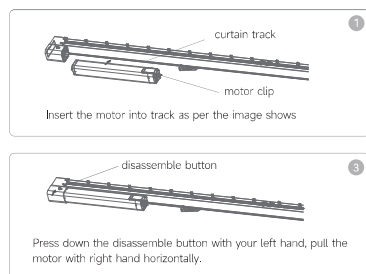
### Note:

1.Some modules may need connect with Gateway, or third party's App.  
2.The motor is supplied without module. It is supplied upon request.  
3.The image above is for your understanding. The motor doesn't include.



## Operating instructions

### Install & Remove the motor



### 1 Assign a remote to a motor (You have 10 seconds to complete the task)

**Method A**, only works for the first remote assigned to the motor.

Power on the motor, press remote's OPEN+CLOSE button simultaneously and release, short press remote's STOP button and release, the motor vibrates, the remote is assigned to the motor.

**Method B**, can be used at any time.

After motor is powered up, short press motor's program button and release, short press remote's OPEN+CLOSE button simultaneously and release, short press remote's STOP button and release, the motor vibrates, the remote is assigned to the motor.

**Or follow below steps:**

After motor is powered up, short press motor's program button and release, short press remote's program button at its backside and release, the motor vibrates, the remote is assigned to the motor.



### 2 Change motor's running direction (You have 10 seconds to complete the task)

Short press OPEN button, the fabric sheets should slide in the direction of open the curtain. Otherwise, follow below steps to change motor's running direction.

Short press remote's OPEN & CLOSE button simultaneously and release, short press STOP button 6 times, short press CLOSE button one time, the motor vibrates, motor's running directions are now exchanged.



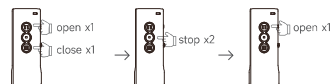
### 3 Set open limit

1.Short press remote's OPEN button to drive the fabric sheets move to your desired position then stop the motor.

2.Short press OPEN & CLOSE button simultaneously and release.

3.Short press STOP button twice.

4.Short press OPEN button the motor vibrates, the open limit is set.



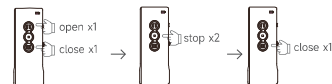
### 4 Set close limit

1.Short press remote's CLOSE button to drive the fabric sheets move to your desired position then stop the motor.

2.Short press OPEN & CLOSE button simultaneously and release.

3.Short press STOP button twice.

Short press CLOSE button the motor vibrates, the close limit is set.



### 5 Set open and close position automatically

The motor can set limits automatically the first time you run it.

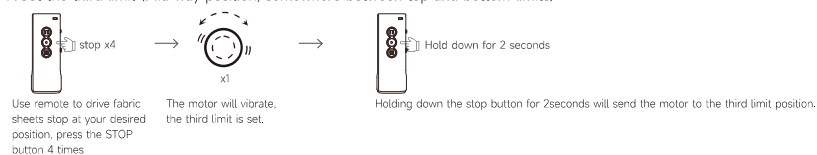
1.Short press OPEN button to drive fabric sheets slide to the ends, the motor will stop running automatically upon obstacle, the open limit is set.

2.Short press CLOSE button to drive fabric sheets slide to the middle, the motor will stop running automatically upon obstacle, the close limit is set.



### 6 The third limit

A.Set the third limit (Mid way position, somewhere between top and bottom limits)



### B.Change the third limit

If you want to change third limit, use remote to drive fabric sheets to a new position, press the STOP button for 4 times, the motor will vibrate. The third limit is set.

### 7 delete limits

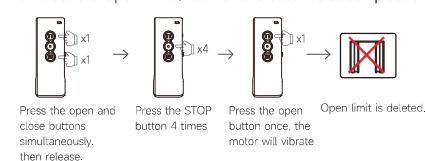
A.Delete limits upon obstacle

If the motor is already set limits, during it's running, if it meets obstacle accidentally, the motor will stop automatically and set this stop position as the new limit position.

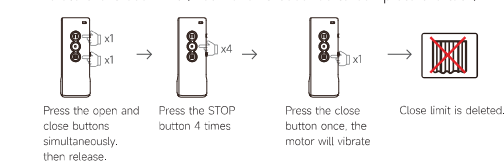
B.Delete limits via motor's program button



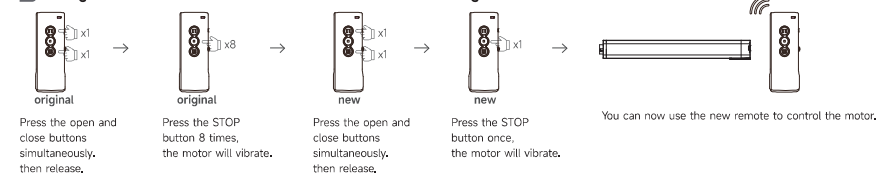
C.Delete the Open limit ( You have 10 seconds to complete the task)



D.Delete the Close limit ( You have 10 seconds to complete the task)

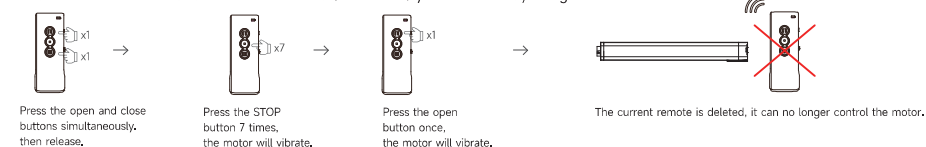


### 8 Assign an extra remote (or channel) to a motor via the original remote



### 9 Delete a remote (or channel) from a motor (You have 10 seconds to complete the task)

**Method A.** This will delete the individual remote(or channel) you are currently using



**Method B.**

**WARNING:**This will delete ALL remotes assigned to the motor

