

## 1. TECHNICAL SPECIFICATIONS

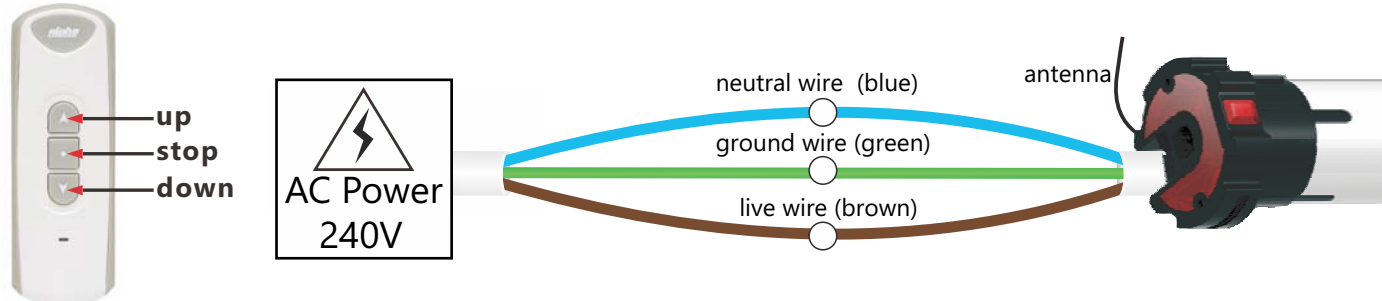
Power: 240V/50Hz

Protection Index: IP44

Up to 15 remotes (or channels) may be assigned to each motor

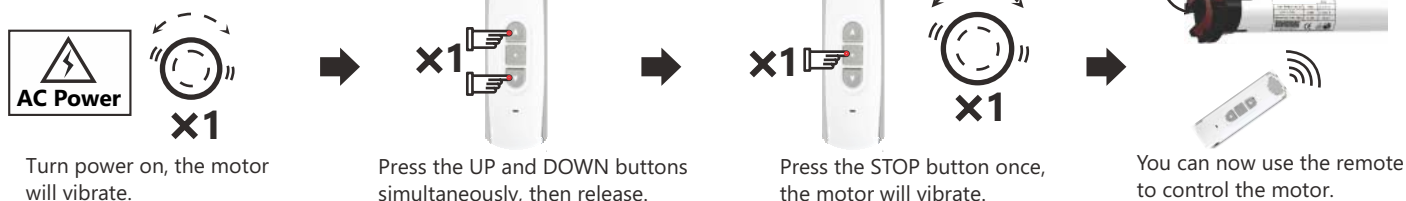
Thermal protection will engage after 4 minutes of continuous running

## 2. WIRE CONNECTIONS



## 3. ASSIGNING A REMOTE TO A MOTOR (you have 10 seconds to complete the task)

**METHOD A.** Only works for the first remote assigned to the motor



**METHOD B.** Can be used at any time.



**METHOD C.** (Use Method C, if Method A or B do not work) Can only be used if you cut and restore power to the motor 3 times. You must allow 3 seconds before restoring power each time and you must allow the motor to vibrate properly each time. After the third cycle, you may assign the remote.

## 4. CHANGING THE MOTOR'S DIRECTION

**Method A**



Hold the red button on the motor down for 3 seconds, The motor will vibrate.



**Method B**



Press the UP and DOWN buttons simultaneously, then release.

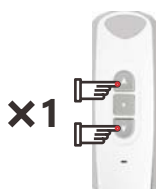
Press the STOP button 6 times.



Press the DOWN button once, the motor will vibrate.



## 5. TURN ON "STEP BY STEP" MODE



Press the UP and DOWN buttons simultaneously, then release.



Press the STOP button once.



Press the UP button once, the motor will vibrate.



The motor is now in "step by step" mode.

## 6. TURN OFF "STEP BY STEP" MODE (motor will run up and down as normal)

Press the UP and DOWN buttons simultaneously, then release.

Press the STOP button once.

Press the DOWN button once, the motor will vibrate.

The motor will now run normally.

## 7. SETTING THE TOP LIMIT (firstly, move the blind to the desired position)

Press the UP and DOWN buttons simultaneously, then release.

Press the STOP button twice.

Press the UP button once, the motor will vibrate.

Top limit is now set.

## 8. SETTING THE BOTTOM LIMIT (firstly, move the blind to the desired position)

Press the UP and DOWN buttons simultaneously, then release.

Press the STOP button twice

Press the DOWN button once, the motor will vibrate.

Bottom limit is now set.

## 9. DELETING THE TOP LIMIT

Press the UP and DOWN buttons simultaneously, then release.

Press the STOP button 4 times.

Press the UP button once, the motor will vibrate.

Top limit is deleted.

## 10. DELETING THE BOTTOM LIMIT

Press the UP and DOWN buttons simultaneously, then release.

Press the STOP button 4 times.

Press the DOWN button once, the motor will vibrate.

Bottom limit is deleted.

## 11. ASSIGNING AN EXTRA REMOTE (OR CHANNEL) TO A MOTOR VIA THE ORIGINAL REMOTE

Original

Original

NEW

NEW

Press the UP and DOWN buttons simultaneously, then release.

Press the STOP button 8 times, the motor will vibrate.

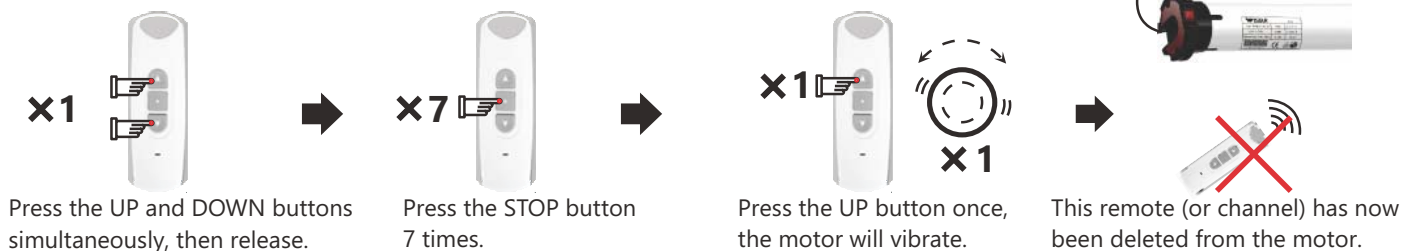
Press the UP and DOWN buttons simultaneously, then release.

Press the STOP button once, the motor will vibrate.

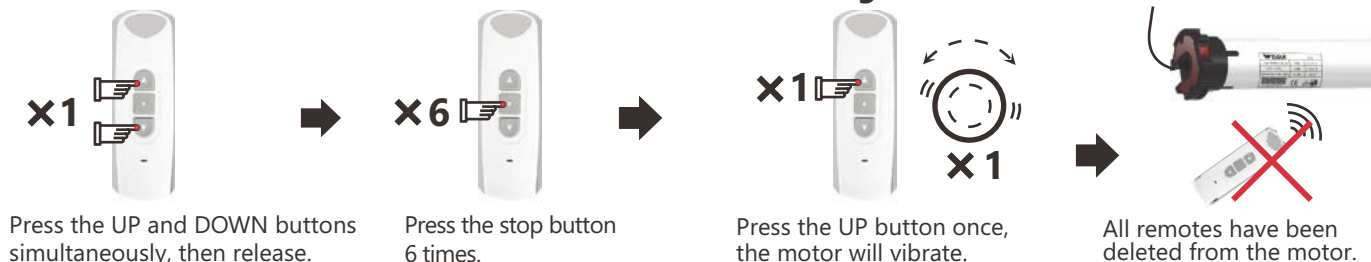
You can now use the new remote to control the motor.

## 12. DELETING A REMOTE (OR CHANNEL) FROM A MOTOR

**Method A.** This will delete the individual remote (or channel) you are using.

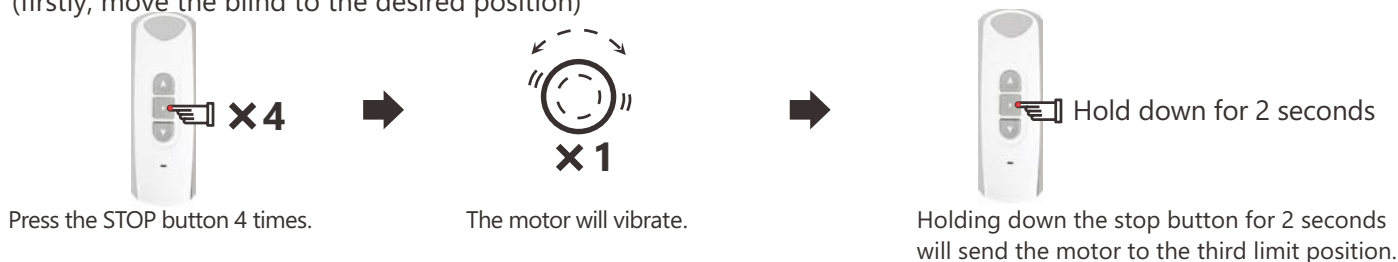


**Method B. WARNING: This will delete ALL remotes assigned to the motor**

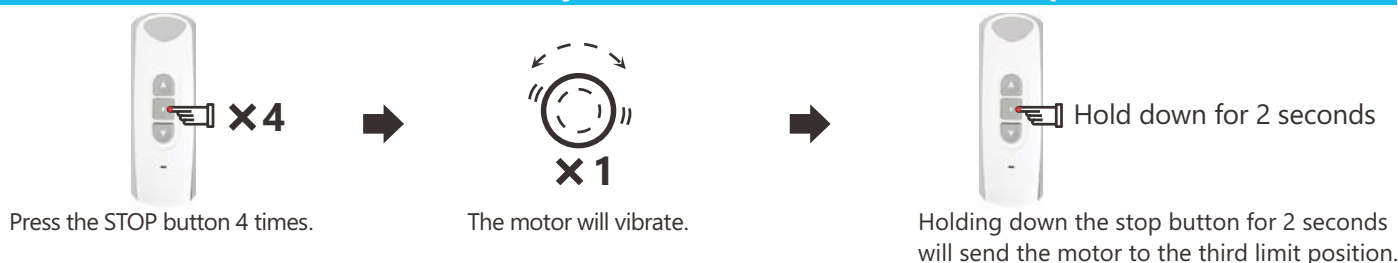


## 13. SETTING THE THIRD LIMIT (midway position, somewhere between top and bottom limits)

(firstly, move the blind to the desired position)



## 14. CHANGING THE THIRD LIMIT (firstly, move the blind to the desired position)



**NOTE: The third limit will be deleted automatically if either the top or bottom limits are deleted.**

## ⚠ Announcement

1. The RE101 remote has been used as an example here in diagrams. All Alpha remotes are compatible with these motors.
2. Strong local RF levels from other equipment may affect some setup functions. If a step fails, simply repeat the process.
3. Be careful not to speed through the setup process until you are 100% sure of what you are doing.
4. These motors and accessories are not toys, do not allow children to play with them.
5. Ambient operating temperature is: -10°C to +55°C
6. All Alpha products may be subject to change without notice.

## Handy Tips

1. If this motor is used on an awning and works with the Alpha RS001 wind-light sensor or RS005 motion sensor, there is constant radio communication between the motor and sensor. If the motor doesn't receive radio communication from the sensor for 35 minutes after opening, the motor will automatically close the awning as a protective measure. This indicates that there is either a problem that needs investigation, or in the case of the motion sensor that the batteries might need changing.
2. Always roll the blind down and up before setting the top limit. Failure to do so may result in a change of limit position due to a change in blind tension. Simply setting the bottom limit first will prevent this happening.
3. When pressing up and down simultaneously during setup, be as precise as possible. It should sound like one button click when both are pressed.
4. If you catch yourself making an error during a setup process, stop and allow 10 seconds for the motor to time out, then try again.
5. Do not hold any buttons down during setup process unless specifically told to do so. A half second press should be plenty and allow 1 second between presses.
6. If you are using a multi-channel remote, make certain that it is on the correct channel before you assign it to a motor. This is a common mistake.