

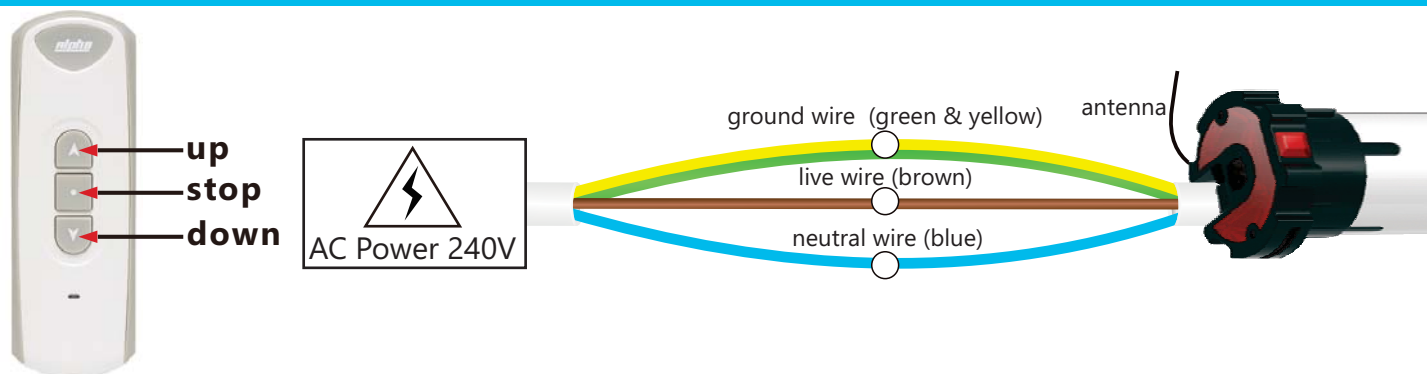
This motor is for Zip Screen application and similar.

1. TECHNICAL SPECIFICATIONS

Power AC 240V/50Hz
Protection Index: IP44

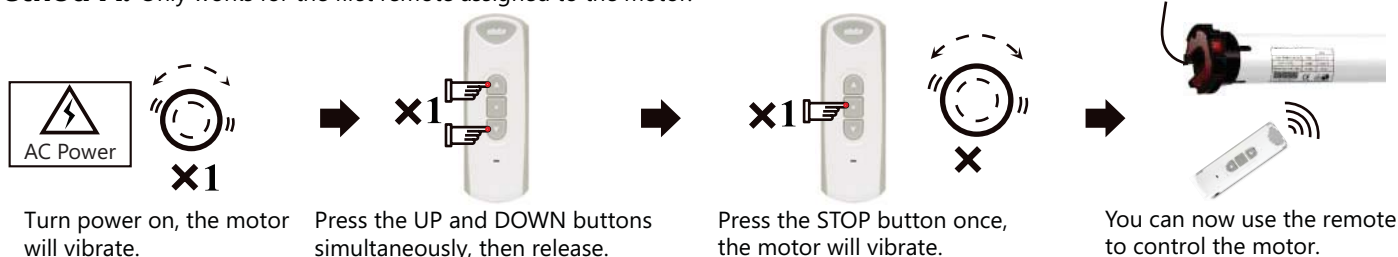
Up to 15 remotes (or channels) may be assigned to each motor.
Thermal protection will engage after 4 minutes of continuous running.

2. WIRE CONNECTIONS

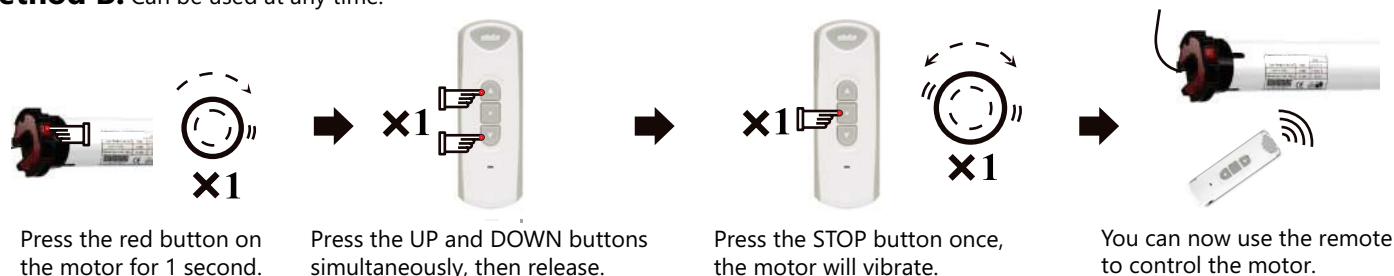


3. ASSIGNING A REMOTE TO A MOTOR (you have 10 seconds to complete the task)

Method A. Only works for the first remote assigned to the motor.



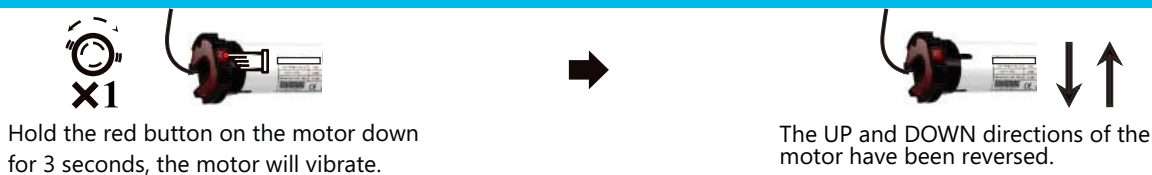
Method B. Can be used at any time.



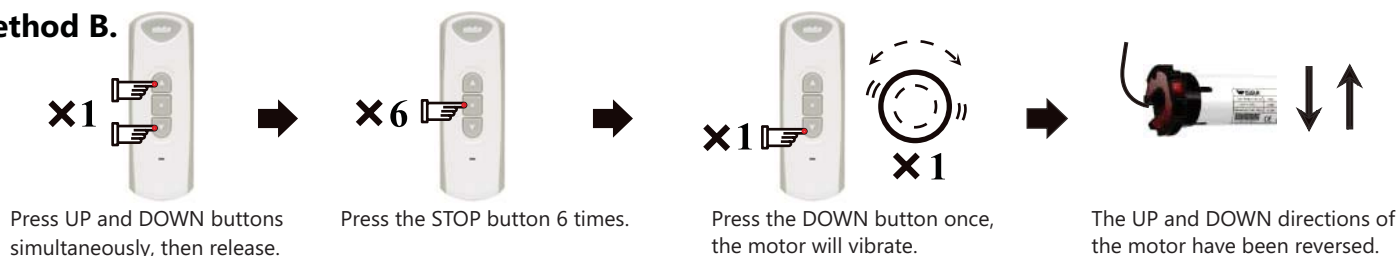
Method C. Can only be used again if you cut and restore power to the motor 3 times. You must allow 5 seconds before restoring power each time and you must allow the motor to vibrate properly each time. After the third cycle, you may assign the remote.

4. CHANGING A MOTOR'S DIRECTION

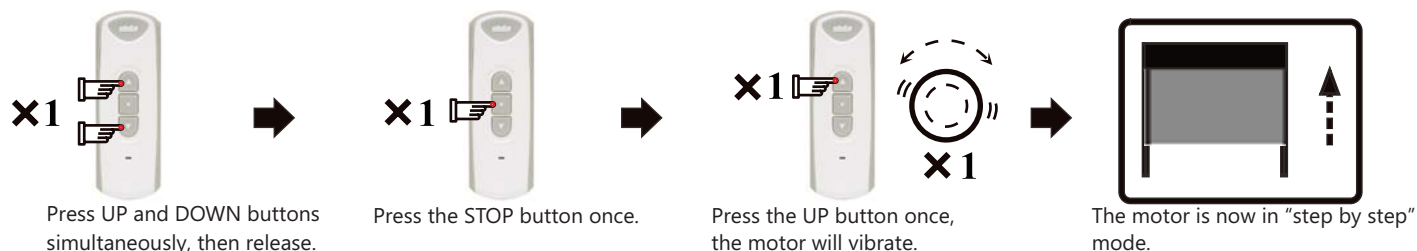
Method A.



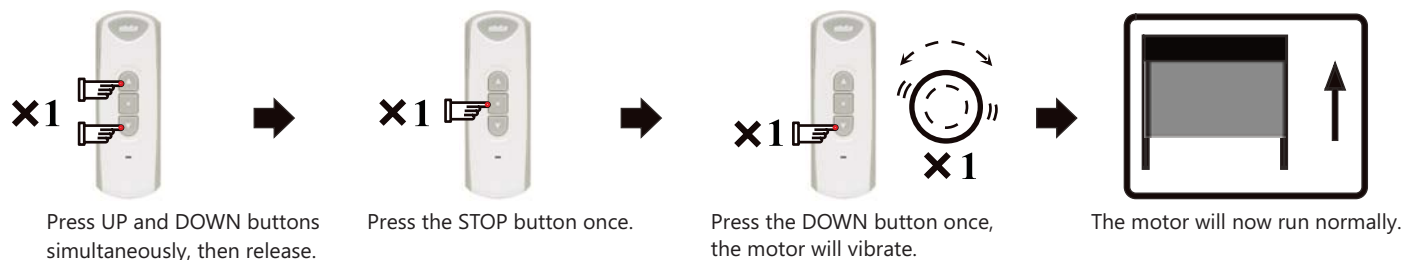
Method B.



5. TURN ON "STEP BY STEP" MODE (motor moves a few millimeters at a time unless button held down for 3 secs)



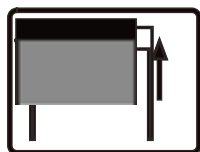
6. TURN OFF "STEP BY STEP" MODE (motor will run up and down as normal)



7. LIMIT SETTING

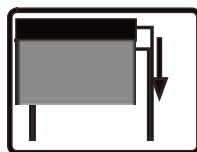
Setting the TOP limit

Move the screen to the desired top limit position. Proceed to instructions below.

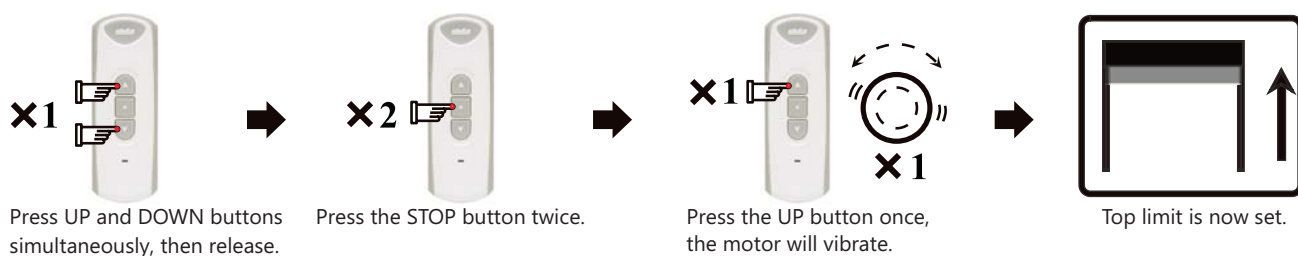


Setting the BOTTOM limit

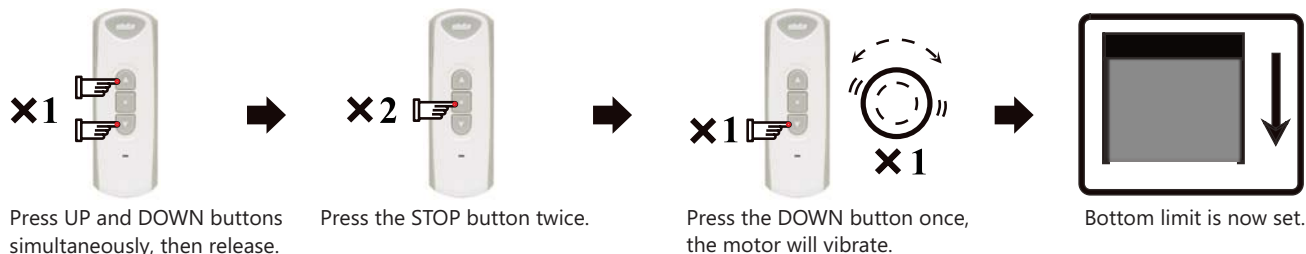
Move the screen to the desired bottom limit position. Proceed to instructions below.



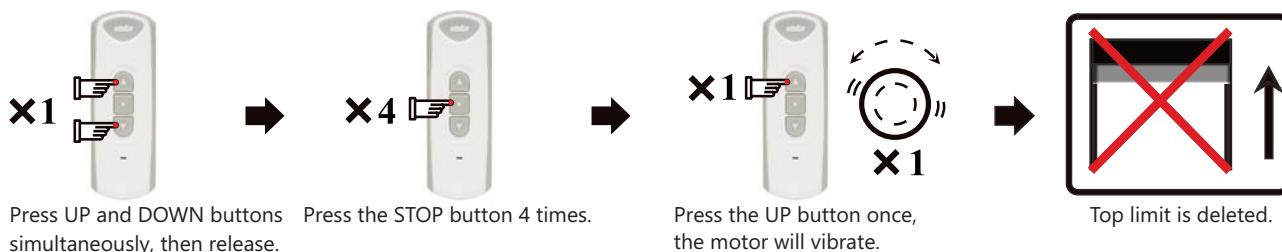
Setting the TOP limit (you have 10 seconds to complete the task)



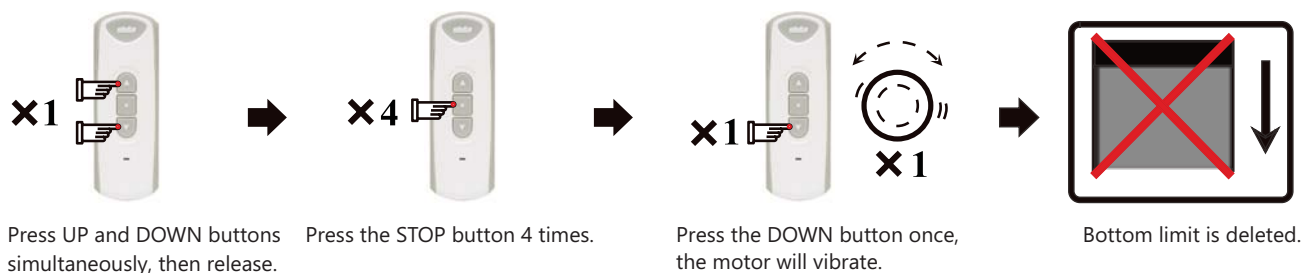
Setting the BOTTOM limit (you have 10 seconds to complete the task)



8. DELETING THE TOP LIMIT

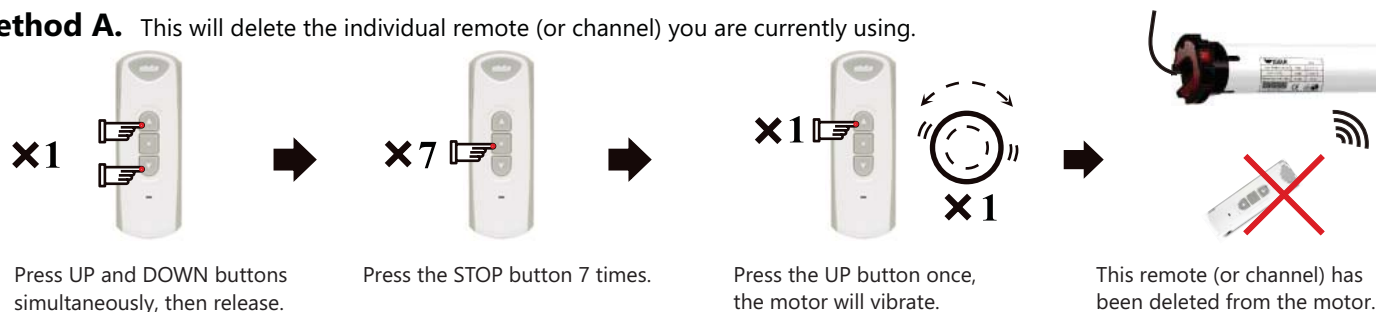


9. DELETING THE BOTTOM LIMIT

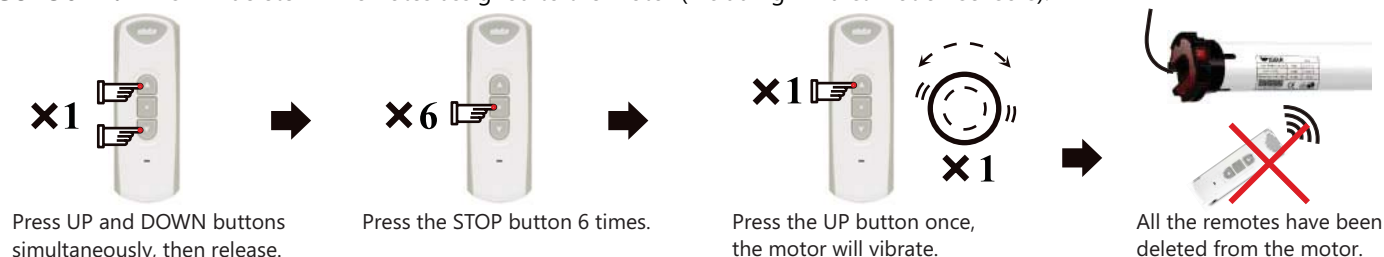


10. DELETING A REMOTE (OR CHANNEL) FROM A MOTOR

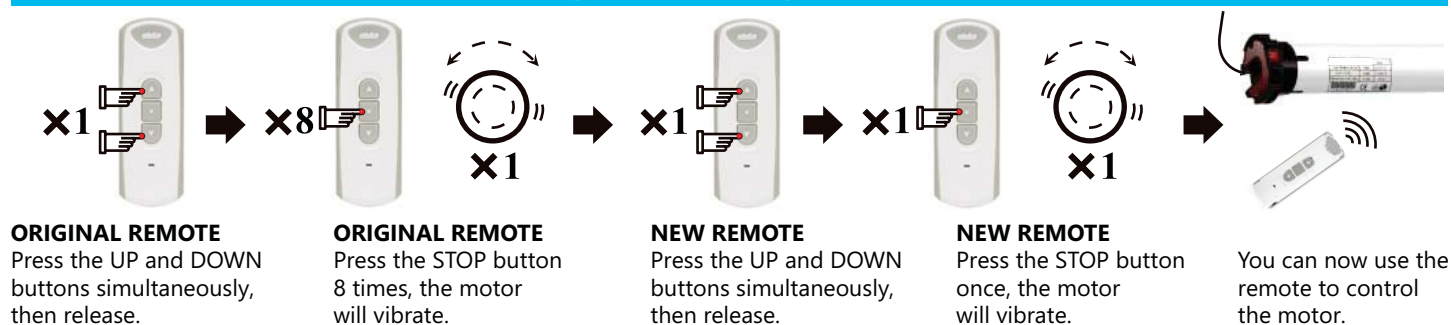
Method A. This will delete the individual remote (or channel) you are currently using.



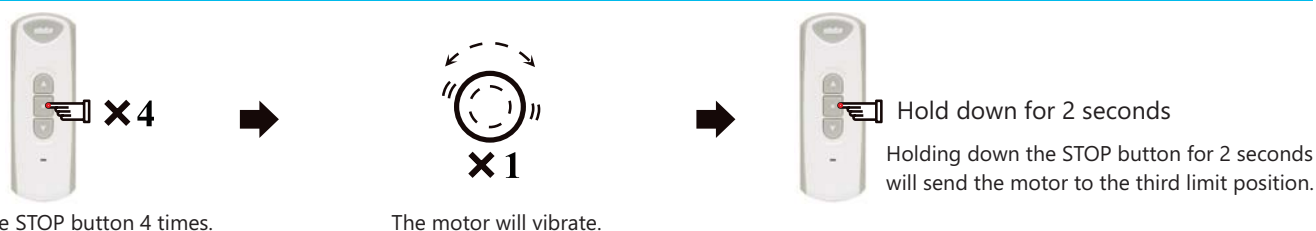
Method B. This will delete ALL remotes assigned to the motor (including wind & motion sensors).



11. ASSIGNING AN EXTRA REMOTE (OR CHANNEL) TO A MOTOR VIA THE ORIGINAL REMOTE



12. SETTING THE THIRD LIMIT (midway position, somewhere between top and bottom limits)



Changing the third limit - Move the blind to the desired third limit position and use procedure above.

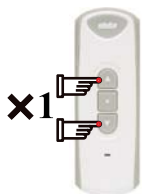


NOTE: The third limit will be deleted automatically if either the top or bottom limits are deleted.

13. OBSTACLE DETECTION FUNCTION (SHORTENED AS OD FUNCTION)

The motor's obstacle detection function is only available after the motor's TOP and BOTTOM limits are set, but this function is not available 10cms above the BOTTOM limit. This is to make sure the screen can be fully closed. It is not workable if the motor is set at "step by step" mode. The OD function is turned off by default. You can use assigned remote to switch OD function between off and on.

Turn on OD function



Press UP and DOWN buttons simultaneously, then release.

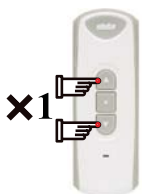


Press the STOP button 3 times, then release.



Press the UP button once and release, the motor will vibrate to confirm OD function is turned on.

Turn off OD function



Press UP and DOWN buttons simultaneously, then release.



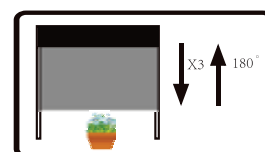
Press the STOP button 3 times, then release.



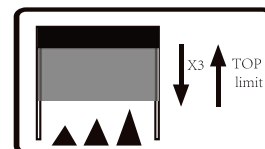
Press the DOWN button once and release, the motor will vibrate to confirm OD function is turned off.

OD function application (Make sure TOP and BOTTOM limits are set. Remote's DOWN button moves screen downward).

A. During motor running downward, every time it detects obstacle, the motor will stop running down but run upward for 180 degrees, then run downward again. If it detects obstacles three times at the same position (position difference less than 6cm), the motor will run upward for 180 degrees and stop running.



B. During motor running downward, every time it detects obstacle, the motor will stop running down but run upward for 180 degrees, then run downward again. If it detects obstacles three times at different positions (position difference bigger than 6cm), the motor will run upward to TOP limit.



Handy Tips

1. The RE101 remote has been used as an example here in diagrams. All remotes are compatible with these motors. If you are using a multi-channel remote, make certain that it is on the correct channel before you assign it to a motor. This is a common mistake.
2. Strong local RF levels from other equipment may affect some setup functions. If a step fails, simply repeat the process.