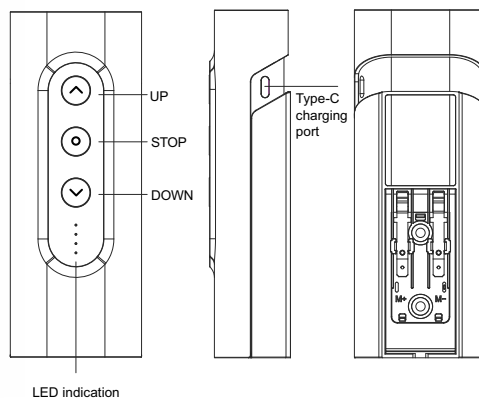


## DC mechanical motors powered by battery switch

### 1-1 PRODUCT DESCRIPTION



The system is comprised by:



#### INDEPENDENT BATTERY UNIT (e)

There are two options available: DCB003 standard battery unit and DCB003-R which has built-in receiver. Both battery units can provide power to the DC 12V tubular motors and recharged by a 5V 1A Type-C charger. The buttons on the unit can control the connected tubular motor.



#### DC12V MOTOR

Mechanical limit DC motor is only powered by the battery unit.

### 1-2 DC12V MECHANICAL LIMIT SWITCH MOTOR PARAMETER

Torque	20Nm
Speed	12rpm
Diameter	45mm
Limit Setting	Mechanical
Protection index	IP 44
Input Voltage	12V
Rated Power	84W

### 1-3 DCB003, DCB003-R PARAMETER

Output Power	60W
Nominal Capacity	3000mAh
Charging voltage	5V/1A
Output voltage	12V
Lifetime	Charge-discharge 500 times
Working Temperature	-10°C--60°C

DCB003-R has an extra built-in receiver over DCB003.

## 1-4 CAUTION

1. Don't discharge without permission.
2. Don't use under high temperature.
3. Avoid chronic sun and water exposure.
4. Don't smash.
5. Don't put into the fire.
6. Don't use the adapter which the voltage is higher or lower than the charging voltage.
7. Charge and discharge every 3-month or 4-month after placing it too long.
8. Keep batteries unreachable for children. Call a doctor immediately if a battery is swallowed.
9. Do not throw the battery away with household rubbish.



## 2- CHARGE THE BATTERY BEFORE USING

Before using the battery unit, make sure it is fully charged by a 5V 1A Type C charger till all of the four indication lights turn on blue.

Battery level 0%--29%: the fourth (counting from top) indication light flashes.

Battery level 30%--49%: the forth indication light turns on blue, the third light flashes.

Battery level 50%--69%: the fourth and third light turn on blue, the second light flashes.

Battery level 50%--69%: the other three lights turn on blue, the first light flashes.

Battery level 100%: all of the four lights turn on blue.

## 3- INSTALLATION BETWEEN MOTOR AND THE BATTERY UNIT



DC motor has two cable wires, red wire for positive to connect with battery unit's M+ while the black one for negative to M-.

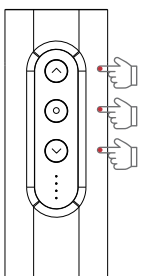
The cable can be introduced along the roller shutter's guide. Once the wires are connected to the wall holder, fix the wall holder to the desired position on the way by using the provided screws.

## 4- LIMIT SETTING

The tubular is equipped with mechanical limit switch, please use the provided adjusting key to set motor's top and bottom limit.

## 5-Operation for DCB003

### 5-1 ENERGY STORAGE MODE



Hold UP, STOP, DOWN buttons for 5 seconds

Energy storage mode is to protect battery during transportation, storing or when sitting unused. The unit is set in storage mode as default setting.

Hold UP+STOP+DOWN buttons for 5 seconds, the indication lights will flash in sequence for 5secs, then all of the 4 lights will turn on for 2secs, the battery unit is set to storage mode, pressing any button won't operate the motor.

This is to save battery if it is not used for a long time.

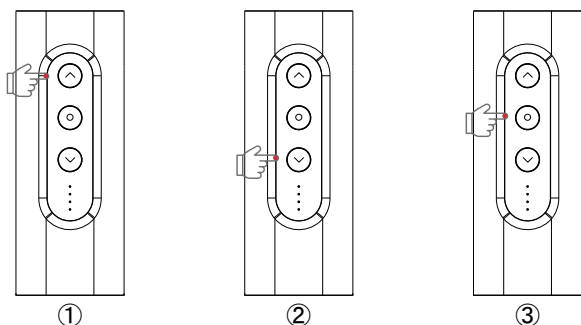
**Activate the battery unit from energy storage mode:**

There are two ways to activate the unit:

Charge the battery for a few minutes.

Short press STOP button 5 times till all of the four lights turns on for 2 seconds.

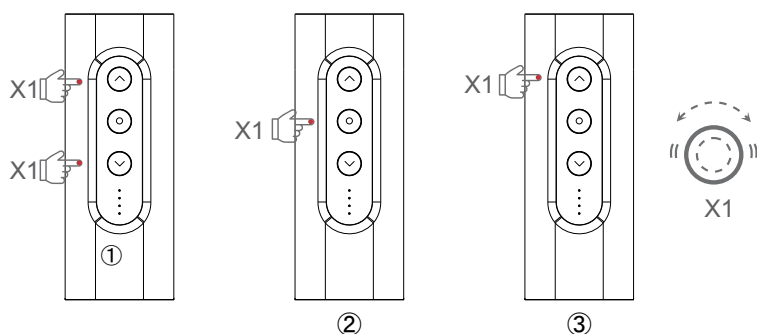
## 5-2 BUTTON CONTROL



- ① Press up button, the motor will run upward.
- ② Press down button, the motor will run downward.
- ③ Press stop button, the motor will stop running.

When the motor in stop state, short press STOP button, the indication lights will show battery's level. Refer part 2 for detailed information.

## 5-3 SET STEP BY STEP MODE (MOTOR MOVES A FEW MILLIMETERS AT A TIME UNLESS BUTTON HELD DOWN FOR 3 SECS)

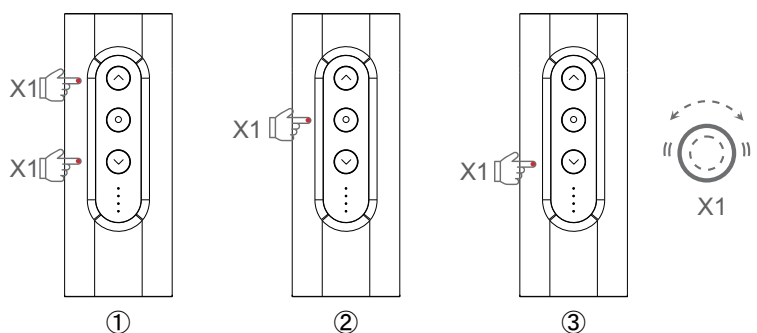


- ① Press up and down button simultaneously and release.
- ② Press stop button and release.
- ③ Press up button and release, the motor will vibrate, then the motor is in step by step mode.

If you hold UP/STOP button for more than 3 seconds, motor can run continuously.

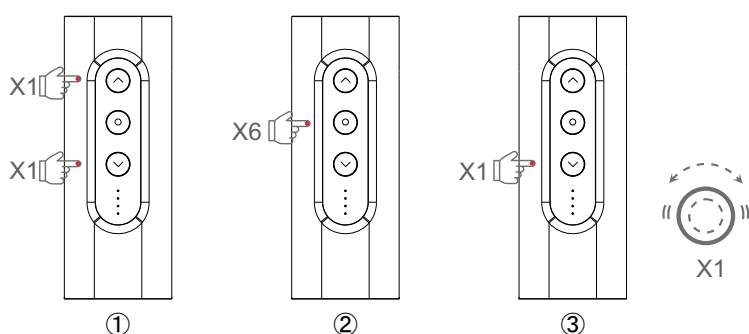
Short press UP/DOWN button, the motor will run step by step.

## 5-4 TURN OFF STEP BY STEP MODE (MOTOR WILL RUN CONTINUOUSLY PER UP/DOWN BUTTON PRESSING)



- ① Press up and down button simultaneously and release.
- ② Press stop button and release.
- ③ Press down button and release, the motor will vibrate, then the motor is in normal working mode.

## 5-5 CHANGE MOTOR'S RUNNING DIRECTION

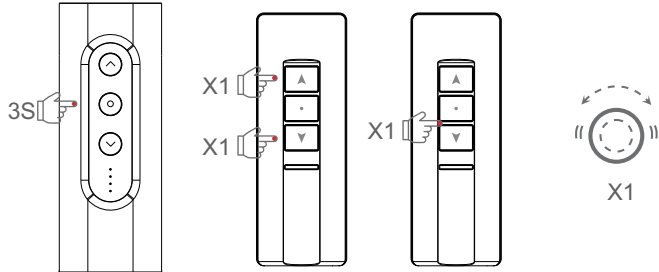


- ① Press up and down button simultaneously and release.
- ② Press stop button 6 times and release.
- ③ Press down button and release, the motor will vibrate, then the motor's running direction is reversed.

## 6- Operation for DCB003-R

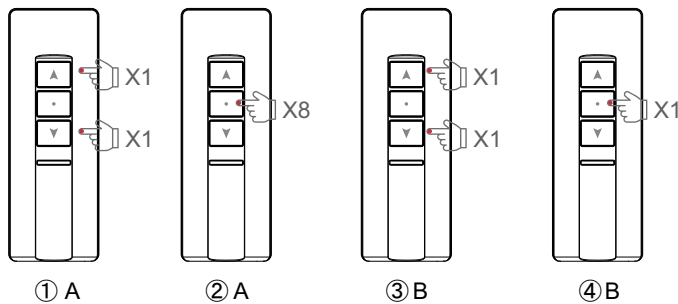
DCB003-R is equipped with built-in receiver RF 433.93Mhz. It can match with a remote to operate the motor. Before operating, make sure to activate the unit (step 4.1).

### 6-1 PAIR A REMOTE TO DCB003-R



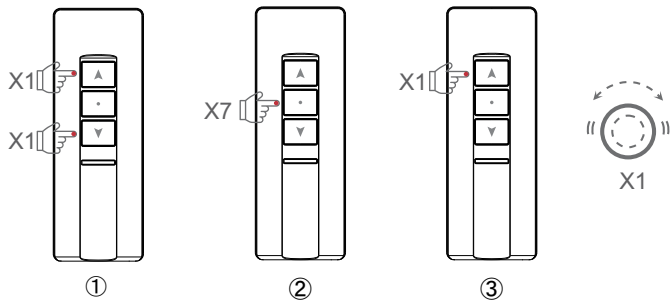
- ① Hold stop button down for 6 seconds, all lights on wall switch will be on.
- ② Then press up+down buttons simultaneously on the remote. The motor vibrates, the remote is paired to the motor.
- ③ You can now control the motor with this remote.

### 6-2 PAIR AN EXTRA REMOTE TO BATTERY UNIT DCB003-R



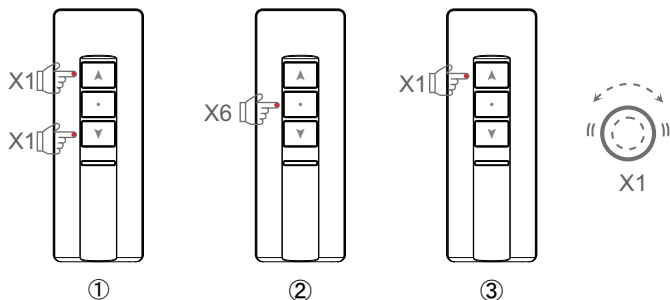
- ① Press remote A's up+down button simultaneously and release.
- ② Press remote A's stop button 8 times, motor will vibrate.
- ③ Press remote B's up+down button simultaneously and release.
- ④ Press remote B's stop button one time, motor will vibrate again, remote B is paired to the motor.

### 6-3 DELETE THE CURRENT REMOTE



- ① Press remote's up+down button simultaneously and release.
- ② Press remote's stop button 7 times.
- ③ Press remote's up button once and release, the motor will vibrate, current remote is deleted, it can not control the motor any longer.

### 6-4 DELETE ALL OF THE PAIRED REMOTES



- ① Press remote's up+down button simultaneously and release.
- ② Press remote's stop button 6 times.
- ③ Press remote's up button once and release, the motor will vibrate, all of the paired remotes are deleted, no remote can control the motor.

\*The rest function like changing motor's running direction, Step by Step mode, are same as DCB003.



At Alpha Tubular Motors, your safety and the effective operation of our tubular motors with lithium-ion batteries are our top priorities. We kindly ask you to follow these important safety guidelines:

**Avoid Overcharging**

Please disconnect the motor from the charger as soon as the green light indicates a full charge. Overcharging can lead to overheating and may pose a fire risk.

**Prevent Overheating**

To help prevent overheating, ensure the motor is not exposed to high temperatures or direct sunlight for extended periods.

**Immediate Action**

If you notice any unusual warmth, discolouration, or odours coming from the motor, please disconnect it from the power source and stop using it right away.

**Proper Storage**

Store the motor in a cool, dry place, away from flammable materials. For best results, keep it within a temperature range of -20°C to 65°C

**Use Approved Chargers**

Always use the charger that comes with the motor or an approved replacement. Using incompatible chargers can create safety hazards.

**Disposal**

Please dispose of lithium-ion batteries according to local regulations. Avoid incinerating or submerging them in water, as this can lead to dangerous reactions.

**Additional Notes**

To keep your motor in top shape, charge it every six months.

For safety, please ensure that children do not play with the remote or motor.

**Liability Disclaimer**

While we at Alpha Tubular Motors strive to provide safe and reliable products, we cannot accept liability for any damage or personal injury resulting from improper use, charging, storage, or handling of our motors or their lithium-ion batteries. By using our products, you acknowledge that you have read, understood, and agree to follow these safety guidelines.